

What to expect when you book a program at the Parliament of NSW



The Parliament of NSW is located between the State Library of New South Wales and Sydney Hospital at 6 Macquarie Street Sydney.

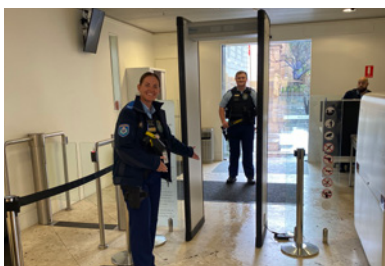


When you arrive at the Parliament, you will be met at the Gatehouse entry by a Parliamentary Educator.

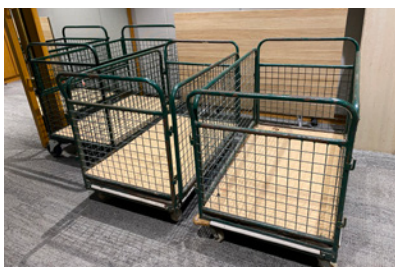
The person who has booked you in will ring you on the mobile number you provided if there is an issue with a demonstration or other disruption on Macquarie Street.



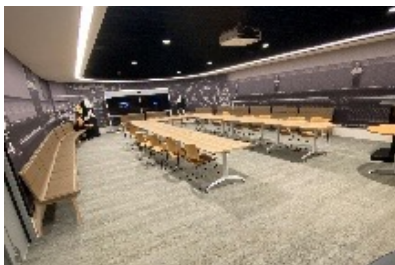
Your group will then be shown into the Gate House where students will need to empty their pockets and put these items and their bags through an airport style Xray. Please ensure that students are reminded not to bring sharp items such as scissors, compasses or sewing kits with them on the day.



Students and teachers will have to walk through an airport style scanner.



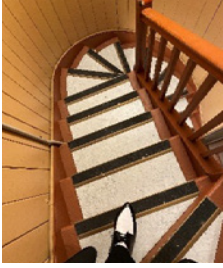
Student bags are stored inside the Parliament in metal trolleys. All bags, except First Aid kits, must be stored.



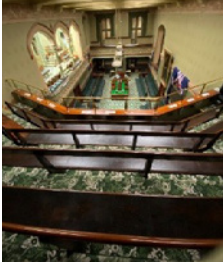
Education Centre

The Legal Studies program is delivered in the contemporary well equipped education centre. Toilet facilities including accessible facilities, are located next to the Education Centre. One hour of the Legal Studies program is held in the education Centre. When available the local Member will meet students in the education Centre.

**Sitting Day Chamber visit
Legislative Assembly**



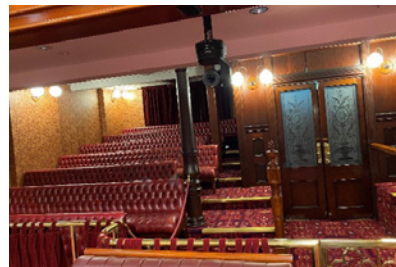
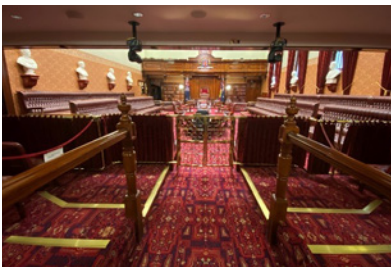
When visiting the Legislative Assembly during Question Time on a Sitting Day, students and teachers are required to use the external stairs that were built in 1843. These stairs are narrow and steep. Please let your Parliamentary Education Officer know beforehand if there are any accessibility concerns.



The view from the gallery where students usually sit is excellent. However, for students or teachers concerned about heights it may be quite challenging. Please let your Parliamentary Education Officer know beforehand if you or your students require additional assistance.

Mobile phones must be switched to silent and photography within the chamber is not permitted.

**Sitting Day Chamber visit
Legislative Council**



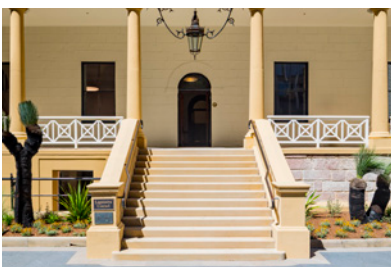
Mobile phones must be switched to silent and photography within the chamber is not permitted. Students are asked to be quiet and composed and not make any gestures that may be misinterpreted.

Non-Sitting Day Chamber visit

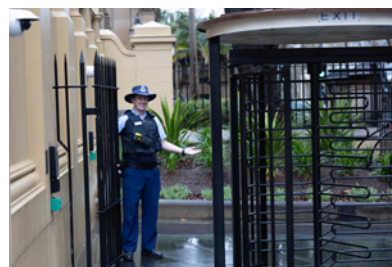


If you are attending Parliament on a non-sitting day, students visit both chambers and participate in a short role play. They sit in the members seats on the floor of each house.

The teacher will be given a choice of Bills upon which the role play will be based. It is best if students are selected for the various roles before the days program.



Please feel free to take a photograph of your group on the steps before you leave as a memento of the day.



When you exit the building, you will use the metal turnstile. If you have a student needing the gate to be open, a Special Constable will assist you.

If you have any questions or concerns about your upcoming visit, please contact an Education Officer
E: dps.education@parliament.nsw.gov.au